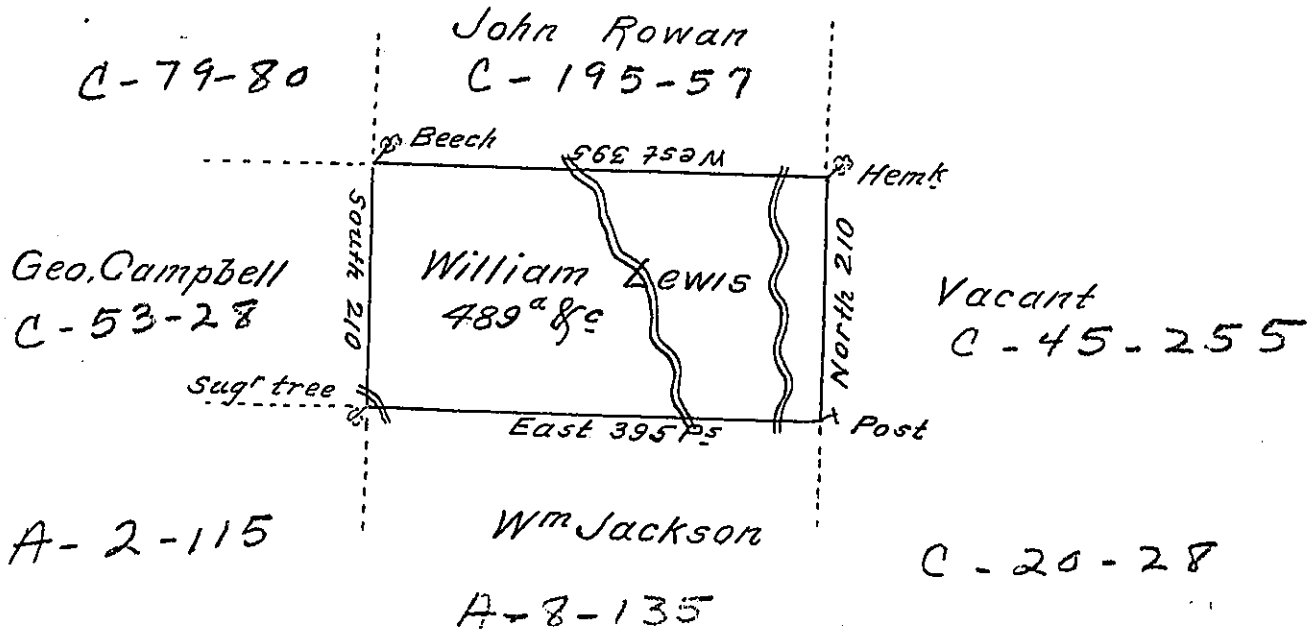


A-22-139



A Draft of a tract of land Called \_\_\_\_\_ Situate on the  
 Waters of Wyalusing Creek Joining Land Surveyed for John  
 Rowan & others in the County of Luzerne Containing four  
 Hundred & Eighty Nine Acres & Allowance of Six P Cent  
 for Roads & c Surveyed for William Lewis the 18<sup>th</sup> Day of  
 Nov<sup>r</sup> 1789 in pursuance of a Warrant dated the 15<sup>th</sup> Day of  
 April 1788

To

Daniel Brodhead Esq<sup>r</sup> }  
 Surv<sup>r</sup> Gen<sup>l</sup> - }

by

W<sup>m</sup> Gray (obl.)

IN TESTIMONY that the above is a copy of the original remaining on file in  
 the Department of Internal Affairs of Pennsylvania, made  
 conformably to an Act of Assembly approved the 16th day of  
 February, 1833, I have hereunto set my Hand and caused  
 the Seal of said Department to be affixed at Harrisburg,  
 this twenty second day of August 1905.

*Isaac S. Brown*  
 Secretary of Internal Affairs.